

HOW TO GET TO ORYGEN IN PARKVILLE



35 POPLAR ROAD PARKVILLE VIC 3052
03 9966 9100

PUBLIC TRANSPORT

TRAM Tram 58, West Coburg–Toorak, stops at the Royal Park Station (stop 27).

TRAIN The Upfield line train stops at Royal Park Station (zoo). Orygen is then a short walk (200m) down the hill (away from the zoo).

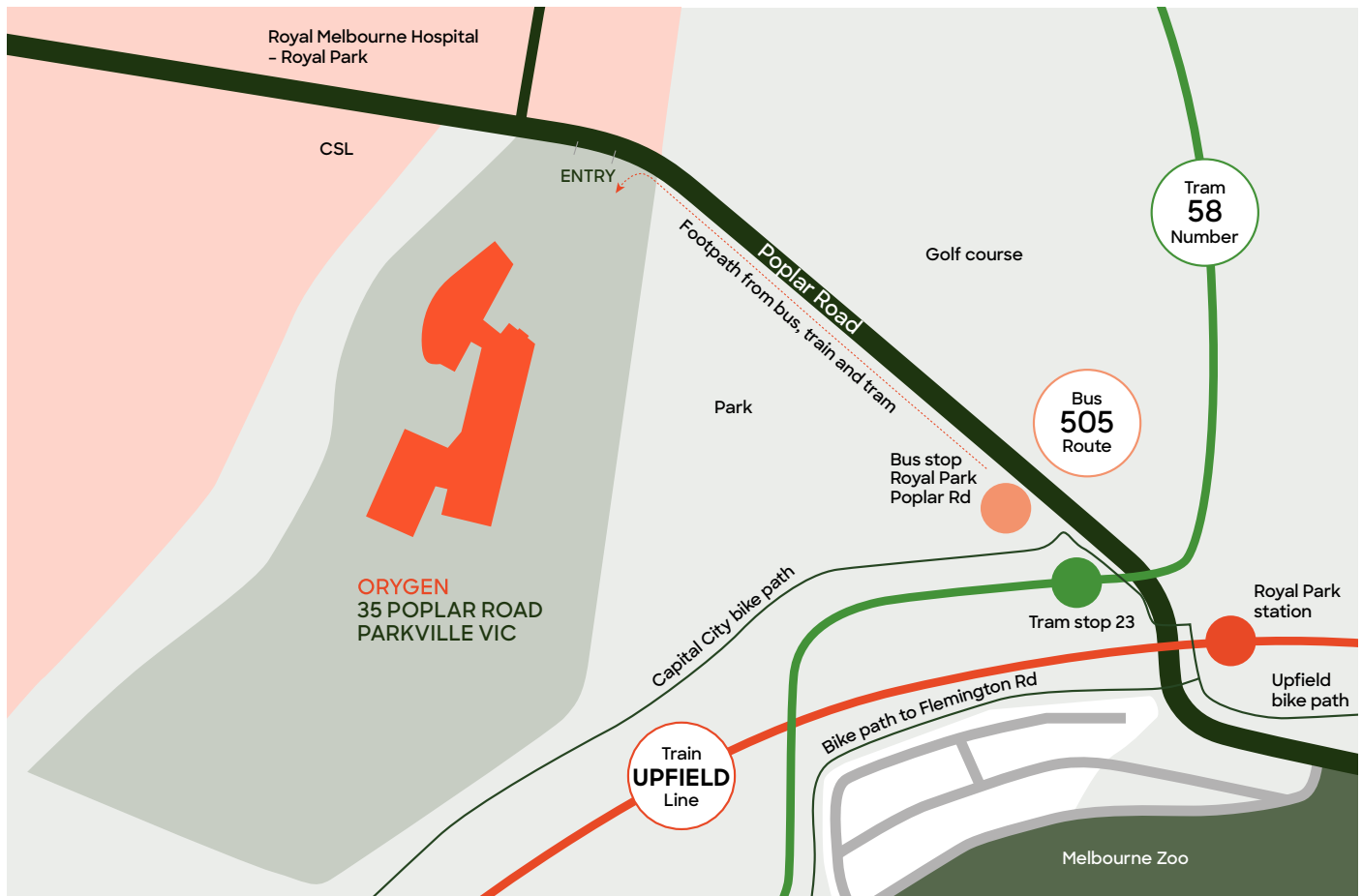
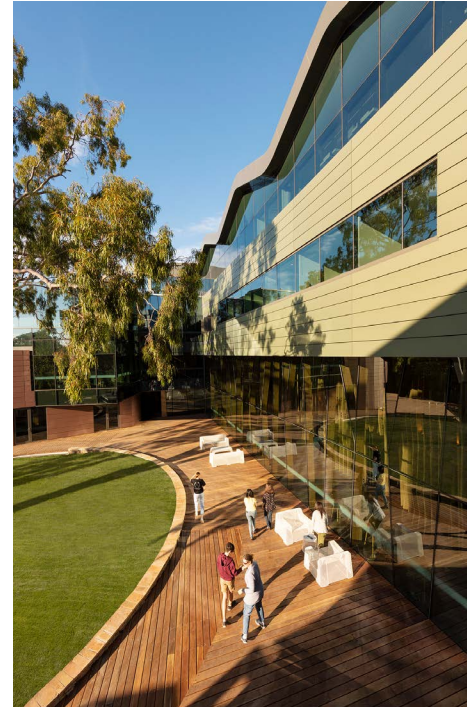
BUS Bus route 505 travels between Moonee Ponds Bus Interchange and Royal Pde Melbourne University via Parkville Gardens. The bus travels along Poplar Rd, with bus stops just before and after the Orygen main entrance.

For further travel info visit ptv.vic.gov.au or download the PTV app from your phone's app store.

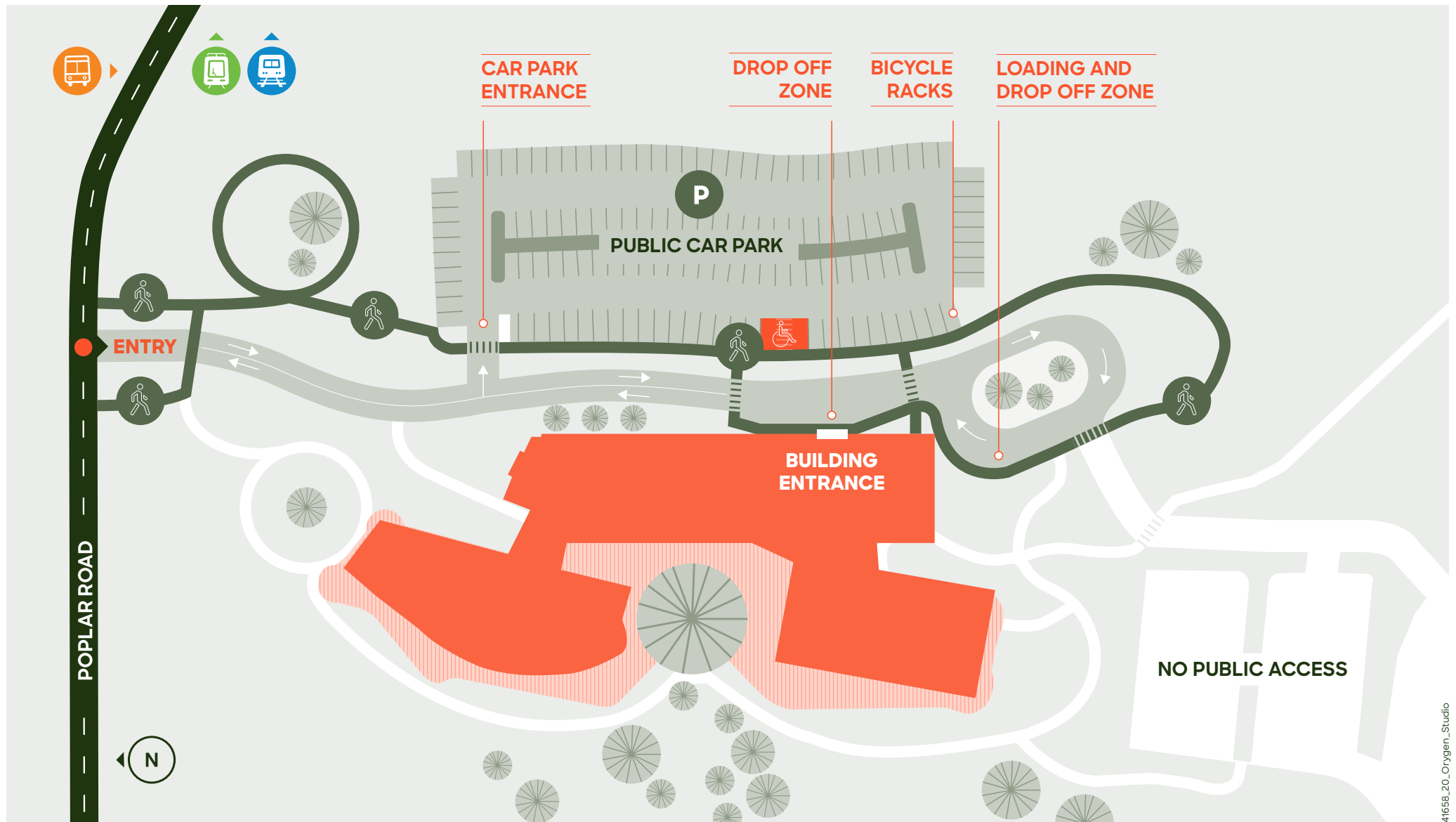
PERSONAL TRANSPORT

CAR Plenty of parking is available on site. First half-hour is free. There are also parking options at the zoo and across the road. Please allow plenty of time in case you are not able to park close by.

BICYCLE Bike paths connect with the station. Ride from there down Poplar Rd and use the front entry.



ORYGEN SITE INFORMATION



41658_20_Orygen_Studio